



**WELCOME TO
US UNIVERSAL SOURCING LTD.**

About Us:



US UNIVERSAL SOURCING LIMITED, we believe in creating solutions that enables the growth of our customers business. We use the resources we have to fulfill the requirements and expectations of our clients by sourcing a great product. We collaborate with our manufacturing partners in delivering a sustainable solution that have a positive impact on customer's supply chain.

We are 100% export oriented well reputed ready made garments exporter & supplier in Bangladesh since 2006.

We are producing and supplying all type of Knit, Woven, Sweater, Jacket, Blazer, Home tex, Towels, Bed sheet, Pillow cover, Duvet cover, Cap, Socks, Boxer, Bra, Sports wear, Real Leather items -wallet, Belt, Parts, Gift item, Jute bag for our honorable Clint's.

Our motto to deliver A-class product to our valued foreign customer's within shortage lead time with competitive a better price.

Email: sarder@universal-sourcing.com, mizan@universal-sourcing.com

Mission & Vision:



The mission of **US UNIVERSAL SOURCING LIMITED**, is dedication to the quality of product, on time delivery, building business network and to earn our customers satisfaction, by leveraging on all available resources, controlling wastages, improving efficiencies and target oriented objective approach to the whole business. Our major objective is to make business in the world a pleasurable and profitable experience and enterprise for all – the Buyer, the Supplier and Elite. The whole concept is to provide the overseas buyer a one-stop Buying Office in Bangladesh. We value our relationships with our Buyers and Vendors as a high point of our business practices. We are sure to meet all your expectations, and give you a great experience in doing business with **US Universal Sourcing Ltd.**

Our Services:



- ❑ Sourcing Team globally source for fabrics and accessories as per Clint's requirements.
- ❑ The Production expertise source for right factory for right products.
- ❑ Arrange Lab dip, Accessories, pattern to make Sample as per Artwork.
- ❑ Followed Clint's requirements for Yarn Count Construction, Shrinkage, Wash Standard, Flammability, Crocking / Colour Fastness, Tearing strength, Ph Level, AZO, Etc.
- ❑ Followed Clint's Comments independently.

Our Approach:



CUSTOMERS FIRST!

Our customers are the focal point of our business model and the ultimate barometer of our activity. This means every new innovation we implement is designed to improve the human experience. To deliver better quality, more efficient and more sustainable processes every single time.

Our Strengths:



- A Brief History: Established the company in the year of 2006 Now dealing full Fledged operation with several buyers Europe, USA and Canada.
- We are dedicate to fashion design, development, sourcing and manufacturing.
- We supply multi product clothing to a cross section of global agent / Import's /retailers.
- We are able to deliver varying models, meeting the individual customers requirements.
- Incorporating Design & Development.
- Applying the maximum social, ecological and technical standards.

Organization:

Presently the facility employs are over 20 skilled workers in its production facilities. Marketing, Planning, Merchandising, Recharge & Development, Quality Control, Shipping, Finance and Administration are managed by competent professional..



Current Clients:



- Next - UK
- Cora - France.
- Stokomani - France.
- Sogesma - Belzium.
- Boathouse - Canada.
- Bemontex B.V. (Life Line) - Netherland.
- Forestal - Spain.
- Sauwy Sport Wear S.L. - Spain.
- Carrefour - Spain.
- Coppel Corporation - USA.
- Cheeky - Argentina.
- Bench - Philippine.

Certification Status:

Our most of the Factories are Certified process of ACCORD, BSCI, SEDEX, WRAP, OEKO TEX, as well.

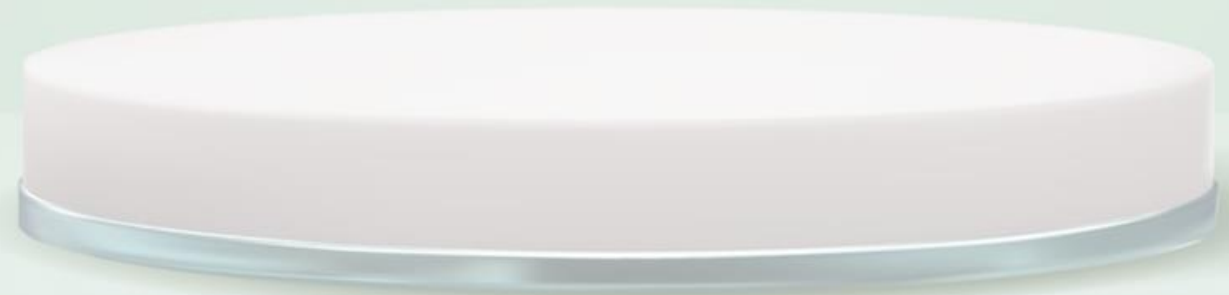


Our Featured Product Categories:



- Design developing and manufacturing a wide portfolio of high quality clothing including Menswear, Women's, Children's wear.
- Any kind of Woven Trousers, Bermuda, Chino, Cargo, Jacket & Beach wear.
- Any kind of Woven Shirt, Dress, Blouse, Nightwear & Sport's wear.
- Any kind of Sweater's Kid's, Men's, Ladies.
- Any kind of Padding Jacket, Padding Vest, Softshell Jacket, winbker.
- Any kind of Sweat Shirt, T-Shirt, Jogger, Active wear, Slip wear, Boxer, Bra.
- Any kind of Blazer.
- Any kind of Home tex, Towels, Bed sheet, Pillow cover, Duvet cover, Cap, Socks, Real Leather items -wallet, Belt, Parts, Gift item, Jute bag.

Product Beach Wear



Product Non Denim



Product Denim Pant



Product Ladies Denim Pant



NOTE 8

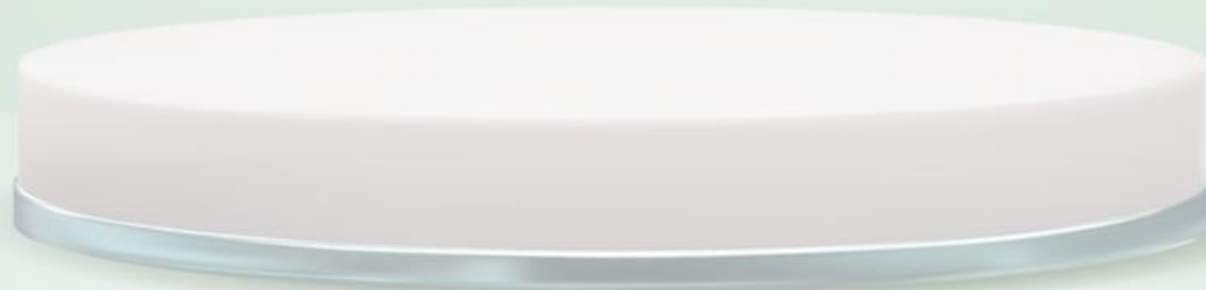
TE 8
TUSAR

TE 8
TUSAR

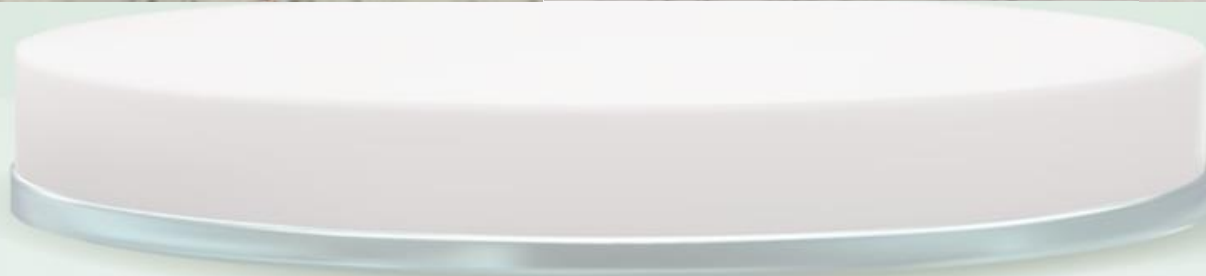
Product Kid's Denim Pant



Product Men's Shirt



Product Ladies Dress



Product Ladies Dress



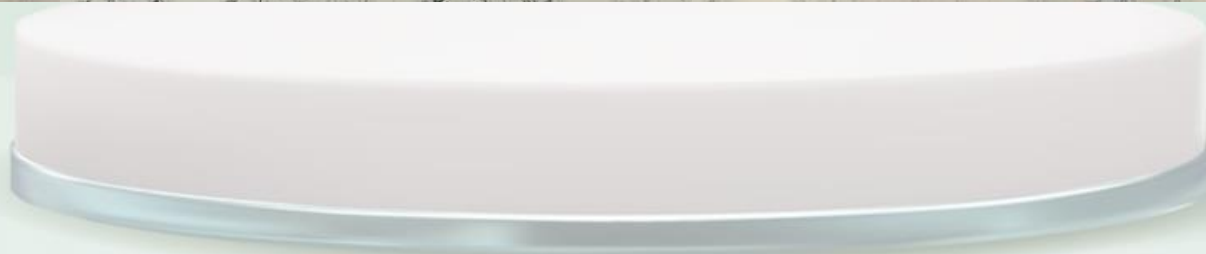
Product Ladies Dress



Product Ladies Jacket



Product Kid's Dress



Product Men's Tee Shirt



Product Men's Polo Shirt





Product Men's Sweat shirt





Product Men's Sweat Jogger



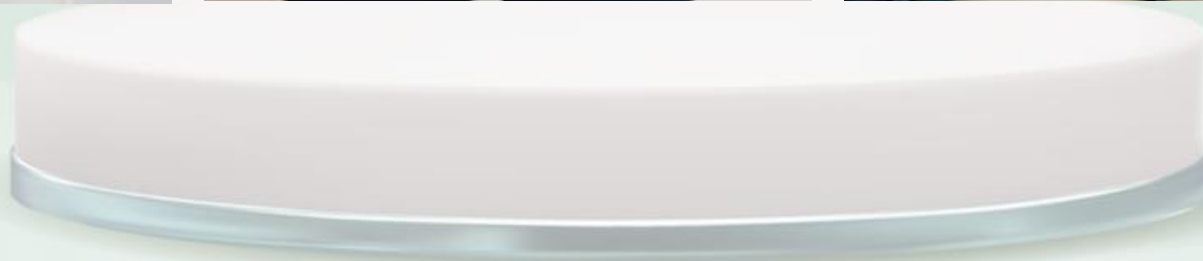
Product Ladies Knit Item



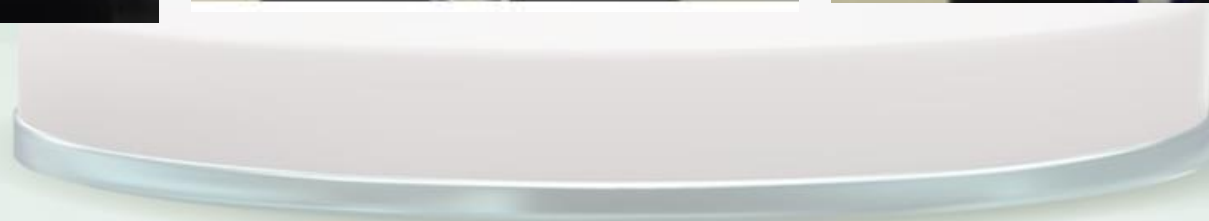
Product Kid's Knit Item



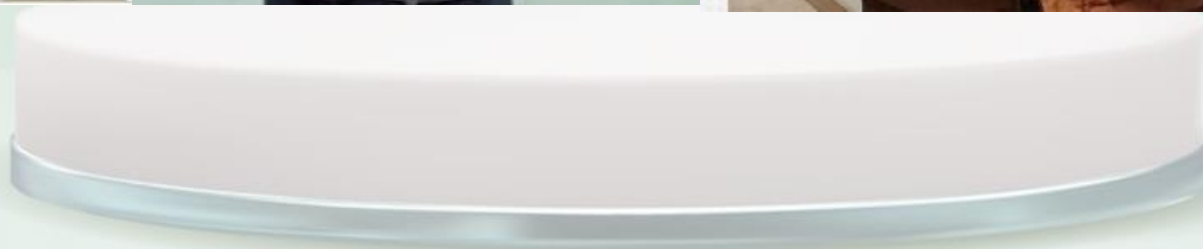
Product Lingerie Item



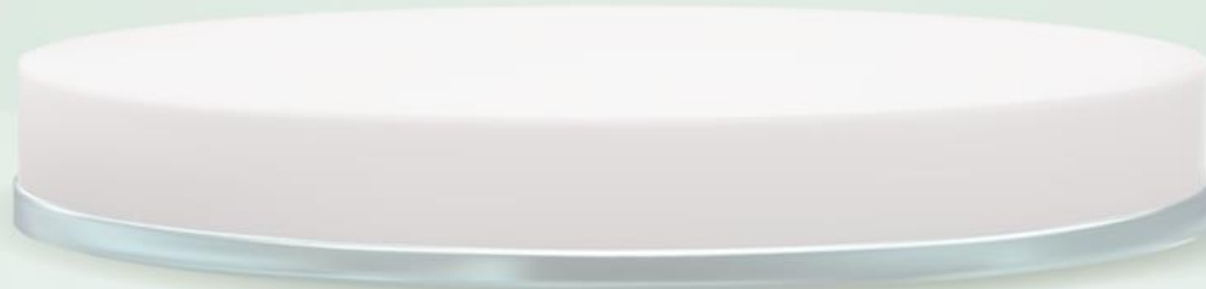
Product Lingerie Item



Product Outwear



Product Men's Blazer



Product Men's Polo Sweater



Product Men's Sweater



Product Ladies Sweater



Product Ladies Sweater



Product Kid's Sweater



Business Ethics



- **Ø Congenial work place environment**
- **Ø No Child Labor.**
- **Ø Adequate living wages provided according to the law and regulation.**
- **Ø No discrimination in work force.**

Contact Us!



Sarder Elias Hossain.

Managing Director.

Cell: +8801819223281/01983300077

Email: sarder@universal-sourcing.com

Md.Mizanur Rahaman

Manager Marketing & Merchandising.

Mobile : +8801631790169

Email: mizan@universal-sourcing.com

US UNIVERSAL SOURCING LIMITED

House#491, Ground Floor, Road # 08/C (East)

DOHS Baridhara, Dhaka-1206, Bangladesh.

Bank Information.

The Premier Bank PLC.

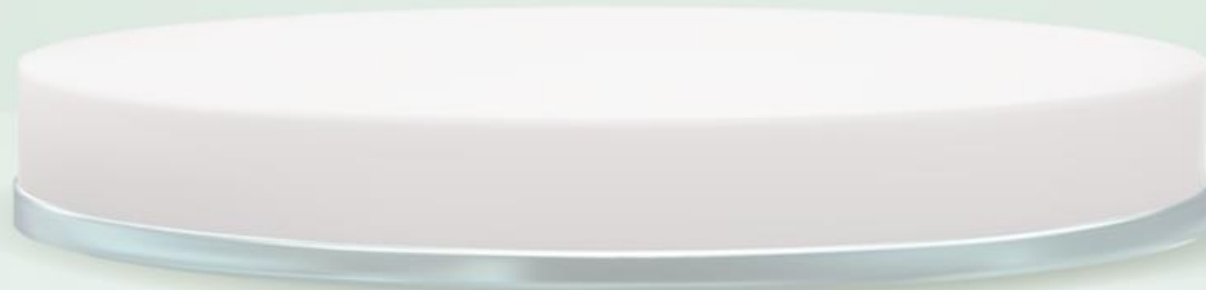
Gulshan Circle 2 Branch.

Doreen Tower, Level-3, 6-A, North Avenue,

C/A Gulshan-2, Dhaka-1212, Bangladesh.

A/C No: 014911100001212

SWIFT: PRMRBDDHGCD







Thanks for watching our profile.

